

MPS Extended Task Definitions & a few holiday Snaps

Motorised Transport.

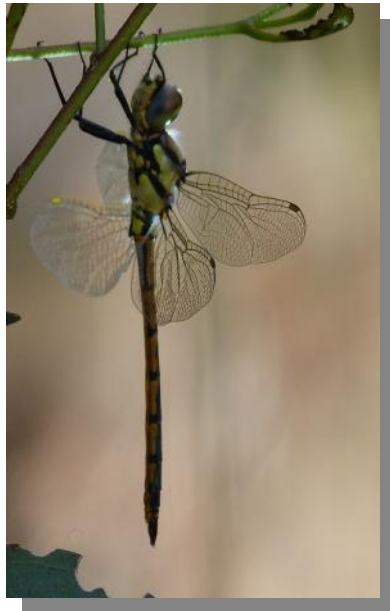
The photograph must have a vehicle with a motor (Land, Sea or Air) that is capable of transporting people, goods or services as the main object of the image and must also show the whole subject. It is acceptable to have more than one such vehicle in the image. Animals or non Motorised transport is not acceptable.



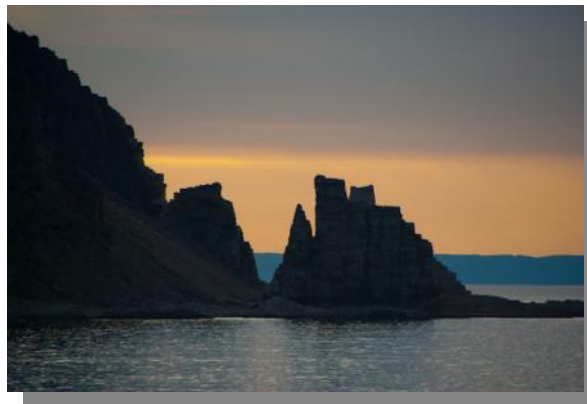
The Olgas 1/250 ISO 100 f/13

Sport.

“Sport” for this entry is any activity that involves one or more players (people) and is something that is undertaken as a recreational activity. Members are encouraged not to include motor or animal sports, as the objective is, to if possible, indicate motion or intended action.



Dragon Fly 1/125s ISO 80 f/2.8



Cathedral Rock 1/350 ISO 100 F/6.7

Reflections.

Reflections for this task are to be anything that is a reflection of something else and must be obvious. The challenge of this task is to look for the unusual image reflection that may be around us but not commonly photographed, although common reflections will be accepted.



Alfred Nichols Garden Lake 1/90 ISO 100 f/6.7



Old Farm House 1/125 ISO 80 f/5.6

MPS Extended Task Definitions & a few holiday Snaps

Still Life.

Commonly still life means something set up for the photograph, it can be of any subject provided that the objects have been arranged and lit specifically for the image. The challenge is to be creative with your lighting arrangements, using the materials you have around you, this may of course include day or night light as well as artificial lights or tints.



Warburton 1/3s ISO 200 F/11



Dragon Fly 3 1/750 ISO 320 f/4.8



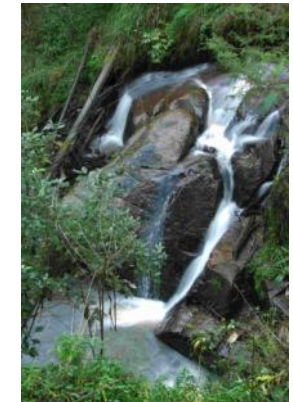
Lily 1/250s ISO 200 f/5.2



Water Garden 1/350 ISO 200 F/9.5



Harbour Bridge 1/250 ISO 100 f/7.1



Olinda creek Waterfall 1/1s ISO 100 f/9.5

Vegetables.

Vegetables are generally pretty boring. The challenge is to do something different, we don't mean creative or digitally manipulated but some way of showing the vegetables (Not fruit) in a different light. E.g. you may shine light through a thin slice, place the pieces in a different way (be conservative with the rude vegetable options, yes they exist) the challenge is to be creative without digital manipulation. Consider the vegetables photographed for food advertising or for food presentation recipe books etc. this is a folio task so all three images must be related.



Opera House 1/250 ISO 100 F/11